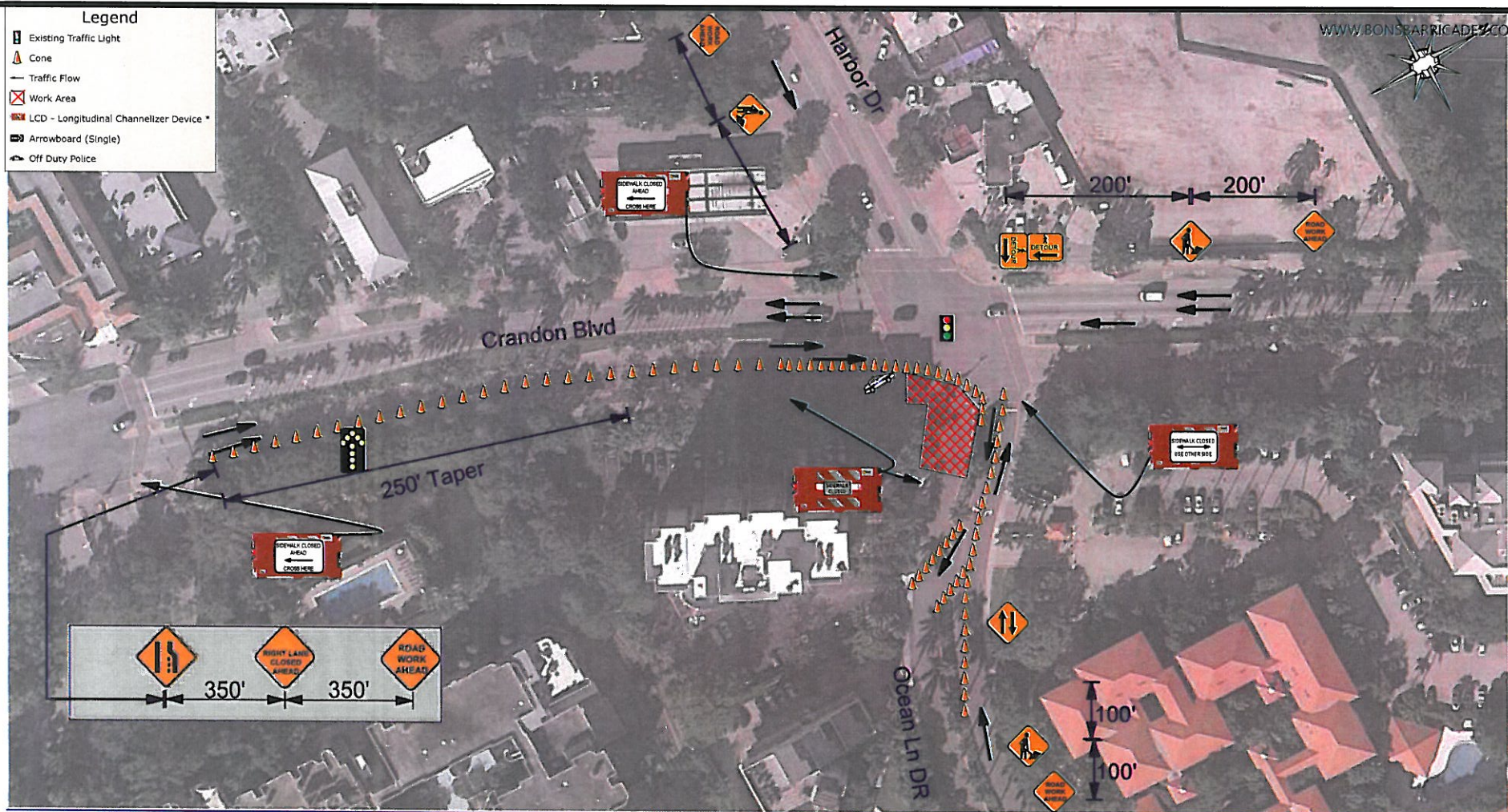




Legend

- Existing Traffic Light
- Cone
- Traffic Flow
- Work Area
- LCD - Longitudinal Channelizer Device *
- Arrowboard (Single)
- Off Duty Police



Date: 02/14/2017 **Author:** Eliseo Lara **Project:** KEY BISCAYNE

Comments:
 Contractor: GREENTECH GROUP SOLUTIONS, LLC.
 Traffic Control Shall be Installed and Maintained in Accordance with the Project Plans. The Current Edition of the Florida DOT Design Standards, The Standard Specification for Road & Bridge Construction and the Manual on Uniform Traffic Control Devices, Design Standards 600 Series 2017 & MIAMI DADE County Traffic Regulations, Latest Edition, As Minimum Criteria.
 Contractor is Fully Responsible of Project Maintenance