




BARRICADES, INC.
7904 N.W. 67 Street
Miami, FL 33166

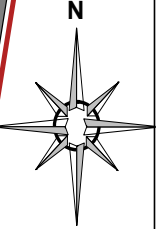
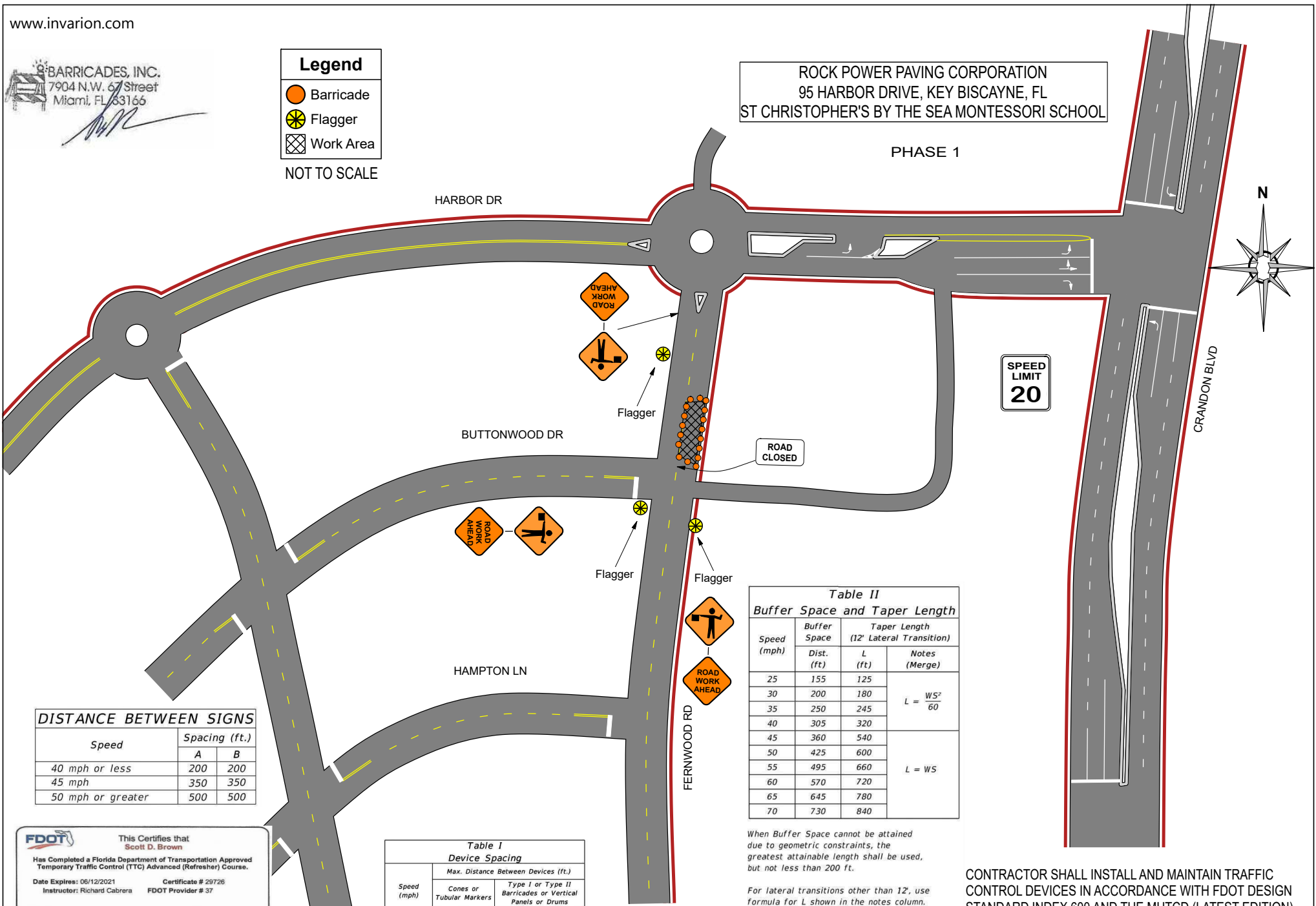
Legend

-  Barricade
-  Flagger
-  Work Area

NOT TO SCALE

ROCK POWER PAVING CORPORATION
95 HARBOR DRIVE, KEY BISCAIYNE, FL
ST CHRISTOPHER'S BY THE SEA MONTESSORI SCHOOL

PHASE 1



DISTANCE BETWEEN SIGNS

Speed	Spacing (ft.)	
	A	B
40 mph or less	200	200
45 mph	350	350
50 mph or greater	500	500

**Table II
Buffer Space and Taper Length**

Speed (mph)	Buffer Space (ft.)	Taper Length (12' Lateral Transition)		Notes (Merge)
		L (ft.)		
25	155	125		$L = \frac{WS^2}{60}$
30	200	180		
35	250	245		
40	305	320		
45	360	540		$L = WS$
50	425	600		
55	495	660		
60	570	720		
65	645	780		
70	730	840		

When Buffer Space cannot be attained due to geometric constraints, the greatest attainable length shall be used, but not less than 200 ft.

For lateral transitions other than 12', use formula for L shown in the notes column. Where:

L = Length of taper in feet
W = Width of lateral transition in feet
S = Posted speed limit (mph)

**Table I
Device Spacing**

Speed (mph)	Max. Distance Between Devices (ft.)			
	Cones or Tubular Markers		Type I or Type II Barricades or Vertical Panels or Drums	
	Taper	Tangent	Taper	Tangent
25	25	50	25	50
30 to 45	25	50	30	50
50 to 70	25	50	50	100

FDOT This Certifies that
Scott D. Brown
Has Completed a Florida Department of Transportation Approved Temporary Traffic Control (TTC) Advanced (Refresh) Course.
Date Expires: 06/12/2021 Certificate # 29726
Instructor: Richard Cabrera FDOT Provider # 37

ATSSA
Phone: 540-368-1701
15 Riverside Parkway Ste. 100
Fredericksburg, VA,
www.atssa.com
donna.clark@atssa.com



CONTRACTOR SHALL INSTALL AND MAINTAIN TRAFFIC CONTROL DEVICES IN ACCORDANCE WITH FDOT DESIGN STANDARD INDEX 600 AND THE MUTCD (LATEST EDITION)



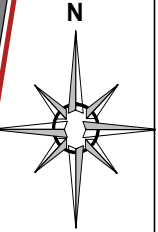
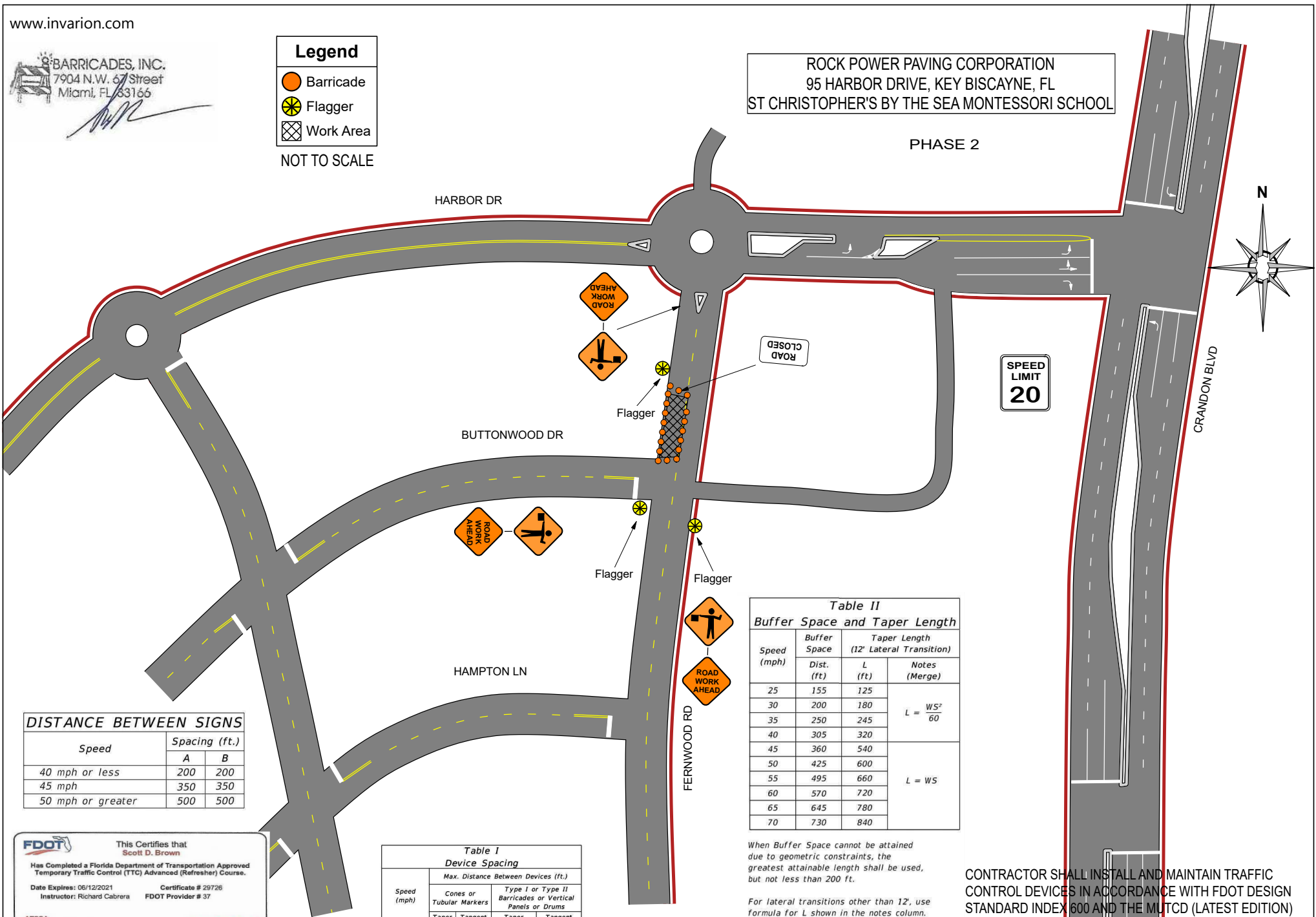
Legend

- Barricade
- Flagger
- Work Area

NOT TO SCALE

ROCK POWER PAVING CORPORATION
 95 HARBOR DRIVE, KEY BISCAIYNE, FL
 ST CHRISTOPHER'S BY THE SEA MONTESSORI SCHOOL

PHASE 2



DISTANCE BETWEEN SIGNS

Speed	Spacing (ft.)	
	A	B
40 mph or less	200	200
45 mph	350	350
50 mph or greater	500	500

Table II
 Buffer Space and Taper Length

Speed (mph)	Buffer Space	Taper Length (12' Lateral Transition)		Notes (Merge)
	Dist. (ft)	L (ft)		
25	155	125	L = WS ² / 60	
30	200	180		
35	250	245		
40	305	320		
45	360	540	L = WS	
50	425	600		
55	495	660		
60	570	720		
65	645	780		
70	730	840		

When Buffer Space cannot be attained due to geometric constraints, the greatest attainable length shall be used, but not less than 200 ft.

For lateral transitions other than 12', use formula for L shown in the notes column. Where:

L = Length of taper in feet
 W = Width of lateral transition in feet
 S = Posted speed limit (mph)

Table I
 Device Spacing

Speed (mph)	Max. Distance Between Devices (ft.)			
	Cones or Tubular Markers		Type I or Type II Barricades or Vertical Panels or Drums	
	Taper	Tangent	Taper	Tangent
25	25	50	25	50
30 to 45	25	50	30	50
50 to 70	25	50	50	100

FDOT This Certifies that
 Scott D. Brown
 Has Completed a Florida Department of Transportation Approved
 Temporary Traffic Control (TTC) Advanced (Refresher) Course.
 Date Expires: 06/12/2021 Certificate # 29726
 Instructor: Richard Cabrera FDOT Provider # 37

ATSSA
 Phone: 540-368-1701
 15 Riverside Parkway Ste. 100
 Fredericksburg, VA
 www.atssa.com
 donna.clark@atssa.com

ATSSA
 SAFER ROADS SAVE LIVES

CONTRACTOR SHALL INSTALL AND MAINTAIN TRAFFIC CONTROL DEVICES IN ACCORDANCE WITH FDOT DESIGN STANDARD INDEX 600 AND THE MUTCD (LATEST EDITION)

SYMBOLS

-  Work Area
-  Channelizing Device
-  Work Zone Sign
-  Required Locations For Either Temporary Or Permanent Curb Ramps.
-  Lane Identification + Direction of Traffic
-  Pedestrian Longitudinal Channelizing Device (LCD) with Mounted Work Zone Sign or separate Work Zone Sign
-  Pedestrian Longitudinal Channelizing Device (LCD)
-  Temporary Sidewalk

GENERAL NOTES:

1. When encroaching work requires a sidewalk closure for 60 minutes or greater, provide an alternate pedestrian route.
2. For spacing of vehicular Channelizing Devices, see applicable vehicular temporary traffic control Indexes.
3. Cover or deactivate pedestrian traffic signal display(s) controlling closed crosswalks.
4. For post mounted signs located near or adjacent to a sidewalk, maintain a minimum 7' clearance from the bottom of the sign panel to the surface of the sidewalk.
5. Provide a 5' wide temporary walkway, except where space restrictions warrant a minimum width of 4'. Provide a 5' x 5' passing space for temporary walkways less than 5' in width at intervals not to exceed 200'.
6. Provide a cross-slope with a maximum value of 0.02 for all temporary walkways.
7. Maintain temporary walkway surfaces and ramps that are stable, firm, slip-resistant, and free of any obstructions or hazards such as holes, debris, mud, construction equipment, and stored material.
8. Remove temporary walkways immediately after reopening of the sidewalk, unless otherwise noted in the plans.
9. Meet the requirements of Index 522-002 for temporary curb ramps.
10. Place pedestrian longitudinal channelizing device(s) across the full width of the closed sidewalk. For temporary walkways, similar to the Sidewalk Diversion, place LCDs to delineate both sides of the temporary walkway.
11. For sidewalk diversions, ensure that there is sufficient R/W for placement of temporary sidewalk and pedestrian longitudinal channelizing devices.

FDOT This Certifies that
Scott D. Brown

Has Completed a Florida Department of Transportation Approved
Temporary Traffic Control (TTC) Advanced (Refresher) Course.

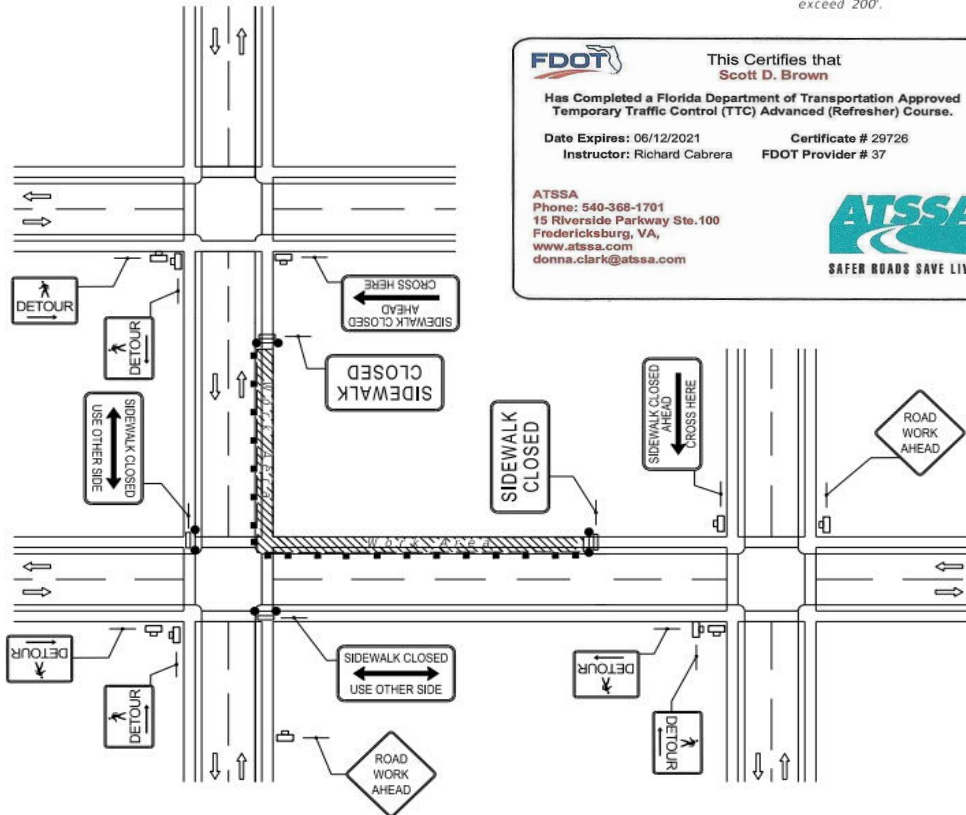
Date Expires: 06/12/2021 Certificate # 29726
Instructor: Richard Cabrera FDOT Provider # 37

ATSSA
Phone: 540-368-1701
15 Riverside Parkway Ste. 100
Fredericksburg, VA,
www.atssa.com
donna.clark@atssa.com

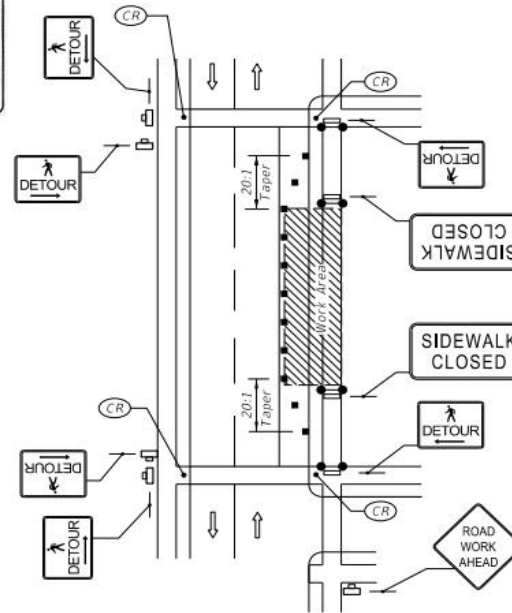


SAFER ROADS SAVE LIVES

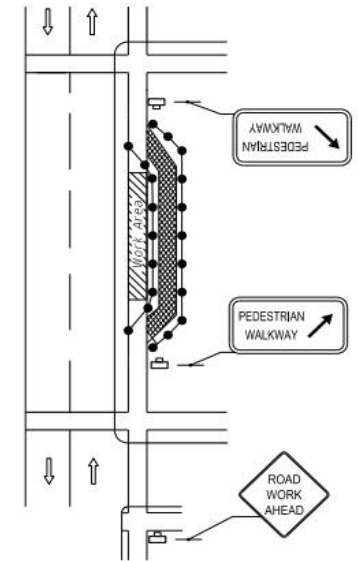
BARRICADES, INC.
7904 N.W. 67 Street
Miami, FL 33166


CROSSWALK CLOSURE AND
PEDESTRIAN DETOUR



SIDEWALK DETOUR



SIDEWALK DIVERSION

LAST REVISION 11/01/17	DESCRIPTION ROCK POWER PAVING CORPORATION 95 HARBOR DRIVE, KEY BISCAYNE, FL ST CHRISTOPHER'S BY THE SEA MONTESSORI SCHOOL		FY 2019-20 STANDARD PLANS	PEDESTRIAN CONTROL FOR CLOSURE OF SIDEWALKS	INDEX 102-660	SHEET 1 of 1
------------------------------	------------------------------------------------------------------------------------------------------------------------------------	-------------------------------------------------------------------------------------	------------------------------	---------------------------------------------	------------------	-----------------