



Guide To Trees And Power Lines





Dear Customer:

We are pleased to provide you with FPL's "Guide to Trees and Power Lines." This brochure is designed to educate and answer the most frequently asked questions about this important topic.

Inside you'll find an explanation of how and why FPL trims trees, important safety information, and useful guidelines that can help you avoid conflicts with trees and power lines. You'll also find a list of tree-trimming contractors who have met the professional training requirements needed to work safely around power lines.

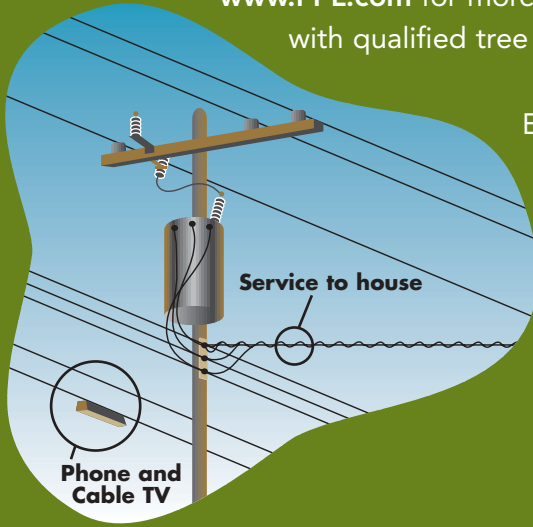
We hope this information is useful to you. If you have questions, please call us at **1-800-226-3545**, or visit our web site at **www.FPL.com**.

Sincerely,

FPL Vegetation Management

Your Safety Is Important

You should not attempt to trim any vegetation growing near or on any overhead power lines. Only specially trained line clearing professionals should work around power lines. Visit our web site at www.FPL.com for more information on working with qualified tree professionals.



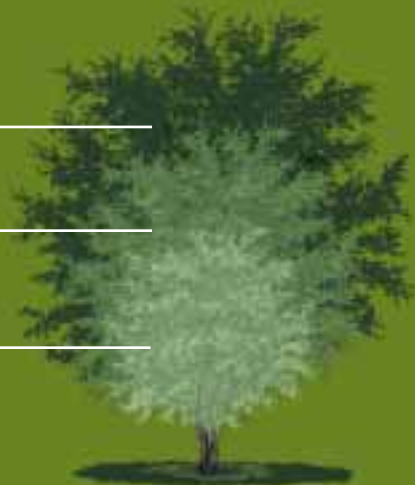
Electric lines usually are located at the top of the pole, farthest from the ground. Cable TV and telephone lines run closer to the ground, below power lines.

Always Consider The Ultimate Mature Size When Planting

10 years _____

6 years _____

3 years _____



A Sensible Approach To Trimming Trees

FPL's strategy in maintaining lines free of tree growth is based on a consistent, planned trimming cycle. Trimming the entire length of a power line on a regular basis – instead of trimming only a small section of the line – allows us to trim more efficiently. This approach improves electric service to all the customers who get their power from that line. While this means FPL does not schedule individual requests for tree-trimming around power lines, that information can be used to plan future maintenance.

If a tree condition needs attention outside of regular maintenance, FPL will let you know by leaving an inspection notice card with a scheduled work date.

A sensible approach to trimming trees means having a thorough maintenance plan that improves the safety and reliability of electric service to our customers.



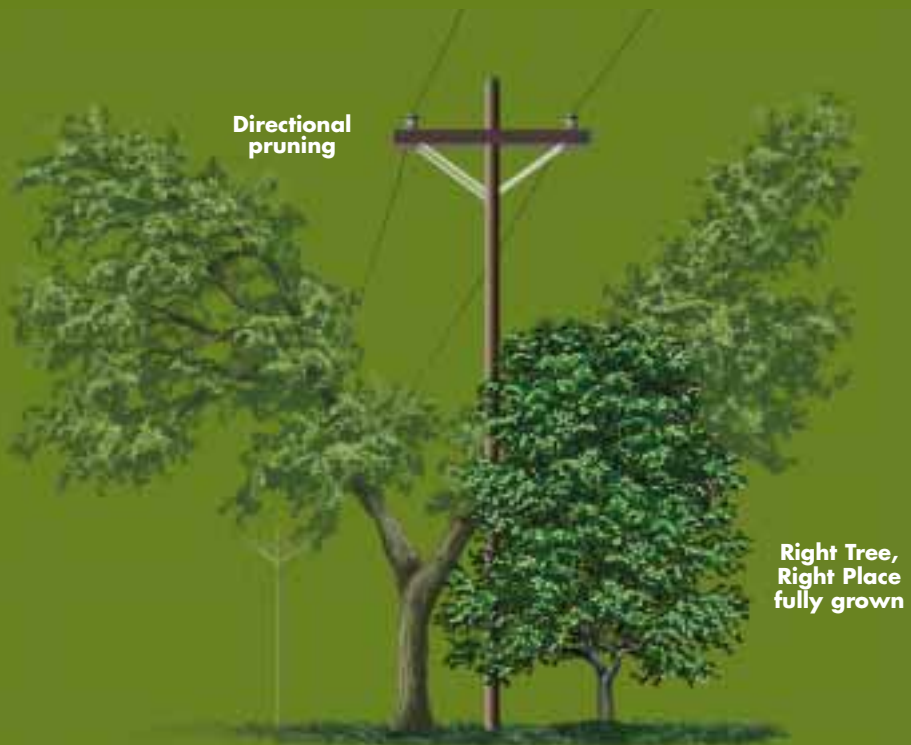
Florida Power & Light Company has been named a Tree Line USA utility by The National Arbor Day Foundation. The Tree Line USA program is sponsored by the Arbor Day Foundation in cooperation with State Foresters and recognizes utilities that meet the requirements of quality tree care practices, annual worker training and tree planting and public education programs.

How FPL Trims Trees

FPL uses qualified arborists who follow guidelines for trimming trees recommended by the International Society of Arboriculture and the National Arborist Association.

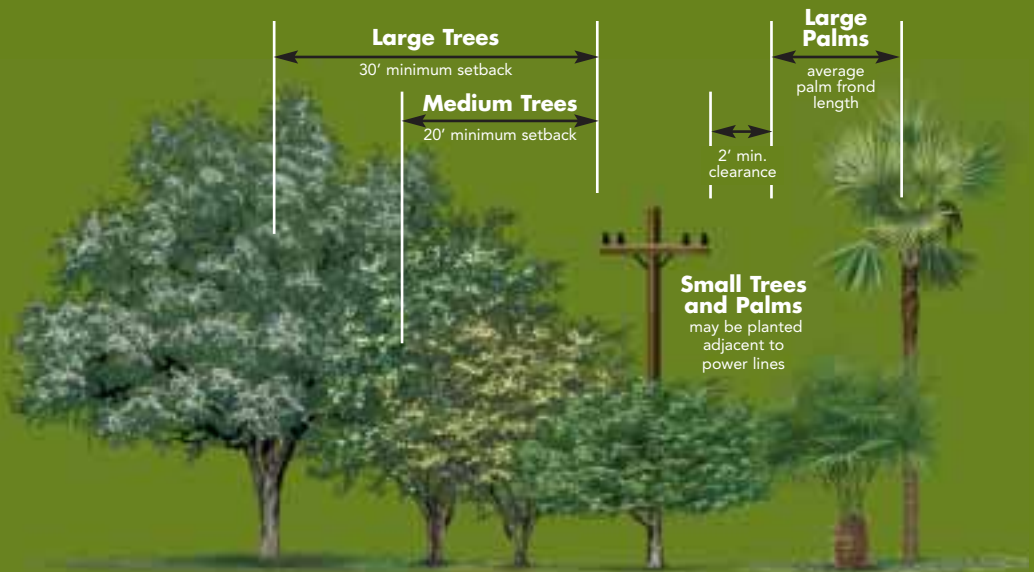
The most professional technique of pruning trees away from power lines is called "directional pruning." This method removes entire branches and limbs to the main trunk of the tree, where trees normally shed them. Future tree growth is then directed away from the power lines and re-growth is reduced.

Directional pruning does not interfere with the tree's natural defense system that protects it from decay and is well supported by years of experience and research.



Plant The Right Tree In The Right Place

Small, immature trees planted today can grow into problem trees in the future. Selecting the right tree and planting it in the right place around power lines can eliminate potential safety hazards and improve the reliability of your electric service. In addition, your tree can achieve its proper height and form. Use the information below as a guide when planning your landscape design.



For more tree options and landscaping information call 1-800-226-3545 for a free Right Tree, Right Place poster or consult with a local nursery or landscaper.

Problem Trees

The following non-native problem trees can cause conflicts when planted adjacent to or under overhead power lines. These trees may be prohibited in some municipalities. Any fast, tall-growing tree that could ultimately reach the power lines could cause a problem.

- Australian pine
- Melaleuca
- Brazilian pepper
- Tree bamboo
- Schefflera
- Ficus

Consult your local nursery or landscaper for more information.

Recommended Trees

(see shaded area)

These trees would be suitable for planting adjacent to overhead power lines.



Silver Buttonwood

Growth Rate: Moderate

Maturity Height x Spread: 15-20' x 20-30'

Foliage: Evergreen

Silver to blue-green foliage provides accent as a small tree or buffer. Multi-stemmed, tough tree adapts well to urban areas.



Geiger Tree

Growth Rate: Slow

Maturity Height x Spread: 15-20' x 20'

Foliage: Evergreen

This slow growing tree has striking orange blossoms in the spring. Whether multi-stemmed or with a single trunk, this tree works well as a specimen or patio tree.



Spanish Stopper

Growth Rate:

Slow to moderate

Maturity Height x

Spread: 15-20' x 15'

Foliage: Evergreen

Narrow canopy and the ability to grow in limited soil space makes this tree ideal for parking lot islands and small landscapes. Drought-tolerant once established.



Glaucous Cassia

Growth Rate: Moderate

Maturity Height x Spread: 15-20' x 15-20'

Foliage: Evergreen

Beautiful yellow flowers on an outstanding small tree. Prune to maintain tree form. Ideal for small landscapes as an accent tree.

Florida Thatch Palm

Growth Rate: Slow

Maturity Height x Spread:
6-15' x 6'

Foliage: Evergreen

Excellent native palm for use near patio or adjacent to power line. Adaptable to many soil types and shade areas.





FPL

Tree-Trimming Contractor List



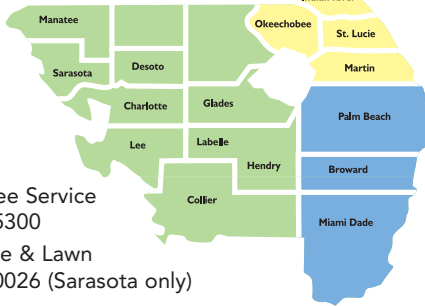
North Area

1. Davey Tree Expert Co.
(904) 768-8733
2. Tree Medic Tree Surgeons
(904) 794-0003 (St. Johns only)

All Areas

Asplundh 1-800-371-1499

Trees, Inc. 1-800-676-7712



Central Area

1. Jimmy's Tree Service
(772) 231-6591
2. Scott's Tree Service
(772) 468-6933
3. Treasure Coast Land & Tree
(772) 429-2431

West Area

1. Kinard's Tree Service
(863) 494-5300
2. Unique Tree & Lawn
(941) 359-0026 (Sarasota only)

South Area

1. Zimmerman Tree Service
(561) 968-1045 (Palm Beach only)
2. Community & Landscape Service
(561) 533-0183
3. Tip Top Enterprises, Inc.
(305) 255-8198 (Dade only)
4. Tree Trimmer's & Assoc.
(954) 561-9514
5. Joey's Tree Service
(305) 666-2044
6. Bornaman Tree Services, Inc.
(954) 771-0656
7. Southern Landscaping
(954) 650-3161 (Palm Beach, Broward, North Dade only)

This list of tree contractors is merely a compilation of businesses which have indicated to FPL that they meet certain qualifications and perform tree-trimming services in the areas designated. This list has been compiled for your convenience only. FPL MAKES NO REPRESENTATION OR WARRANTY, EXPRESSED OR IMPLIED, CONCERNING THE QUALIFICATIONS OR BUSINESS PRACTICES OF ANY OF THE LISTED CONTRACTORS. Since the availability of service work and the associated prices will vary by contractor, you may wish to shop around for comparisons. It is the responsibility of the consumer to verify that the contractor is licensed and insured, and complies with all applicable laws, codes, ordinances, and/or permits.