

Tree Pruning Tips

What you should **NOT DO!**

Over pruning trees is the wrong thing to do for various reasons:

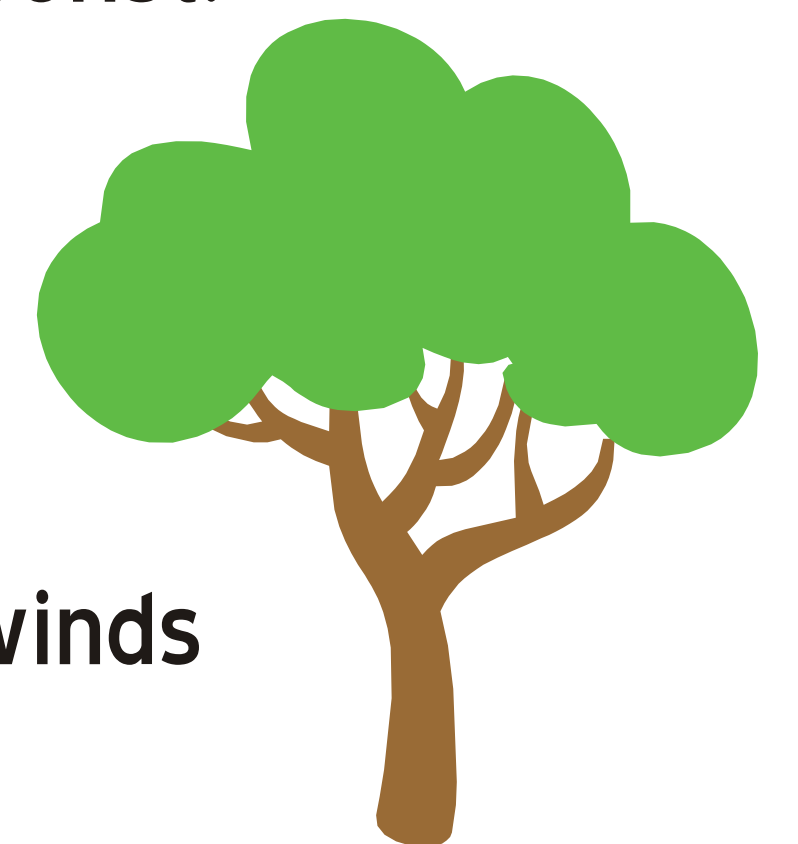
- Over-pruning a tree or trimming it excessively can kill it.
- Over-pruning weakens the tree, making it more vulnerable to break apart during a storm.
- Over-pruning a tree reduces an already scarce tree canopy in Miami-Dade County (A depleted tree canopy has a direct environmental and monetary impact in our community).
- Over-pruning a tree is a violation of Chapter 24 of the Miami-Dade County Code, and the responsible person or persons may be subject to a fine and /or other enforcement action.



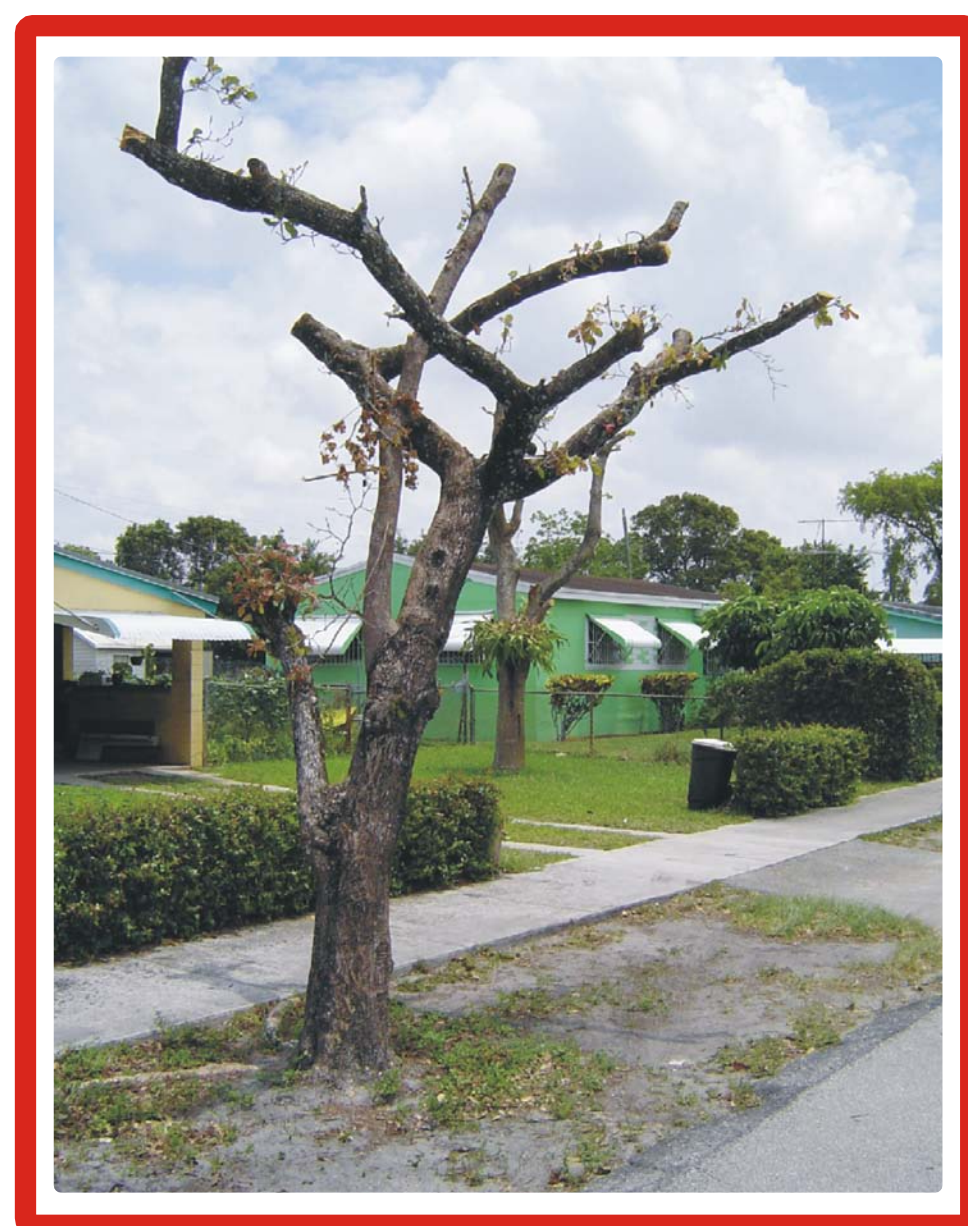
What you should **DO!**

Follow these helpful tips to minimize the impact of a storm to your property and those around you:

- If you need to prune your trees, make sure the lawn care worker/ tree trimmer is a certified arborist. Ask to see their registration/license and insurance. Get a quote in writing.
- NEVER “top” or “hatrack” any tree.
- Do not remove more than 25% to 30% of the tree canopy.
- Remove mainly the interior branches. This will thin the canopy of the tree and allow the high winds to pass through it.
- Make sure to correctly dispose of all tree cuttings (branches and stumps left out in the open can become projectiles during a storm).



Excessively Pruned Trees



If you follow these easy-to-do tips, the impact from tree damage during a storm can be reduced. Remember: the most important thing to keep in mind is **NOT** to over-prune trees. It is a violation of Chapter 24 of the Miami-Dade County to excessively prune trees or to remove / relocate trees without the required Miami-Dade County Tree Removal Permit. Many municipalities have additional regulations.

For more information call:

DERM: 305.372.6574 or 305.372.6789 www.miamidade.gov/derm

Tree and Lawn Care: 305.248.3311 Ext.236 (University of Florida Cooperative Extension) <http://miami-dade.ifas.ufl.edu>

Home Survey Before Planting: 1.800.432.4770 (Sunshine State One) callsunshine.com

FPL Tree Pruning and Information: 1.800.Dial FPL / 1.800.342.5375 fpl.com